

DEFINING THE FUTURE OF ARCHITECTURE, COMPUTING AND ENGINEERING

Our unique academic structure provides you with opportunities to design the future you envision. Our programmes are created around these four key concepts:



Interdisciplinary Learning and Research

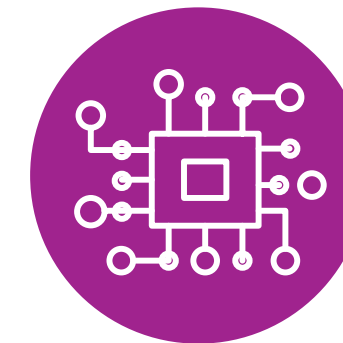
At SUTD, we adopt an interdisciplinary approach in structuring our curriculum and research. Instead of having departments organised along traditional disciplines and as separate independent schools or faculty, we offer interdisciplinary undergraduate and graduate programmes through four pillars and two clusters.



Addressing Large-scale Real-world Problems

SUTD has set aside a multi-million dollar budget to work with our industry and institutional partners to develop a suite of integrated and multi-disciplinary programmes in key economic sectors such as Aviation, Cities and Healthcare, and in artificial intelligence/data science that cuts across all sectors.

All our students will have the opportunities to participate in these programmes and contribute in addressing global challenges in areas such as ageing, urbanisation, cybersecurity and sustainable development.



Digital Competency as a Foundation

Similar to Science and Mathematics, digital competency is also a foundation at SUTD. We ensure that all our students are trained in programming, statistics and probability, analytics and artificial intelligence. They are also able to attain varying depths of digital competencies depending on their interest.



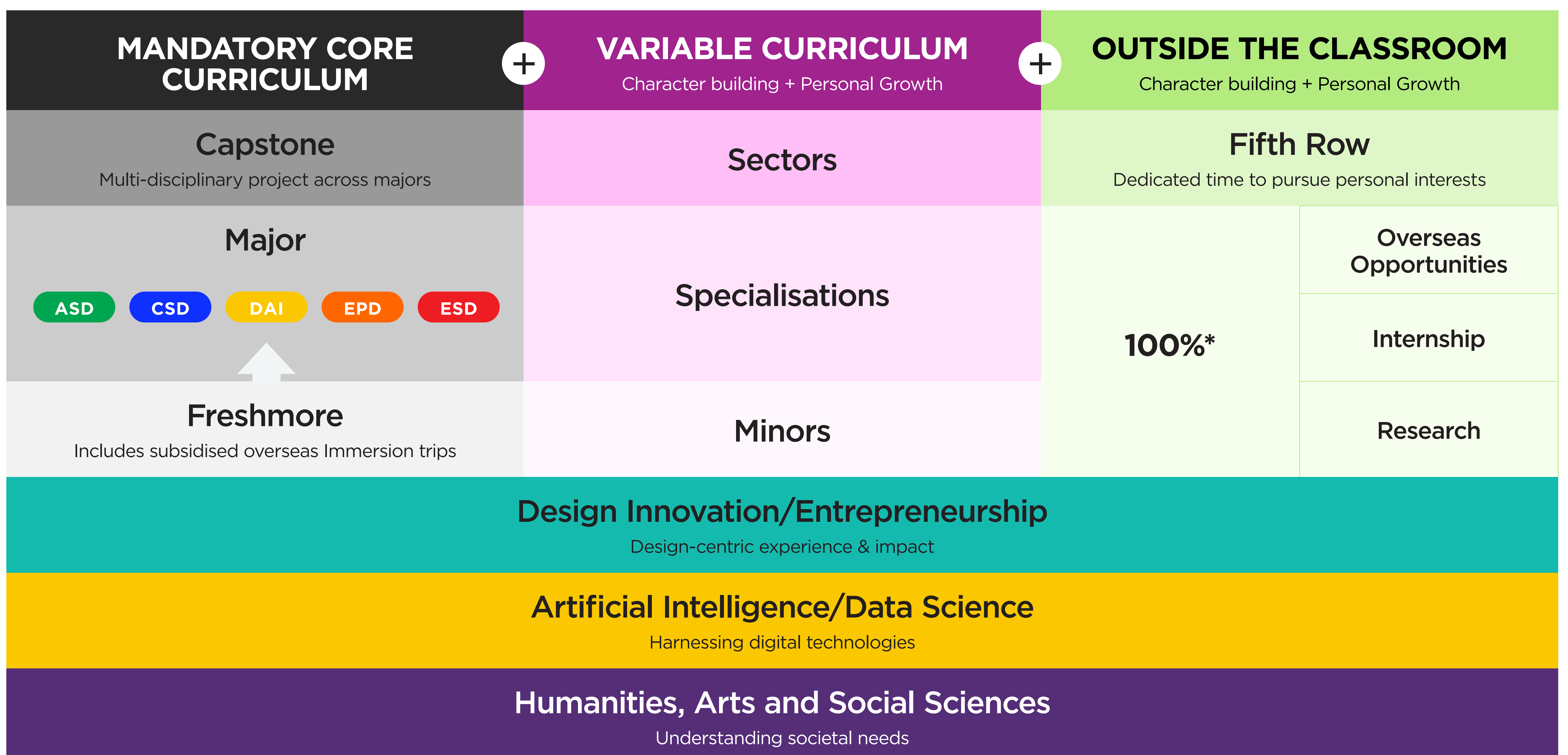
Design Focus and Human-centred

Design is everywhere at SUTD. It is a critical part of our curriculum and research. We focus on the full value-chain of design from conceptualisation, prototyping, manufacturing and maintenance of the solutions developed.

Design at SUTD focuses on the creation of human-centred solutions. Design is the sum of ideas and expertise from different fields to create an effective, efficient and sustainable solution.

SUTD Undergraduate Curriculum

Customisable by building on three main blocks



ASD - Architecture and Sustainable Design

CSD - Computer Science and Design

DAI - Design and Artificial Intelligence

EPD - Engineering Product Development

ESD - Engineering Systems and Design

*All students have overseas, internship and research opportunities.